

1. Product Introduction

1.1: Device Introduction

The HMI-JM070049 Industrial PC is an industrial-grade tablet computer based on the Arduino Uno Q. This product is user-friendly and ideal for developers and makers who are familiar with Arduino Uno Q and seeking a computer for daily use.

1.2: Key Applications

Human-Machine Interface (HMI)
Process Control
Process Monitoring
Industrial Internet of Things (IIoT) Nodes
Environmental Monitoring
Programmable Controllers
Education Applications
ATM Machines...

Warning:

Installation, repair, and maintenance tasks should only be performed by trained personnel. We do not take any responsibility for damages caused by improper handling of the product.

1.3: Hardware Specifications

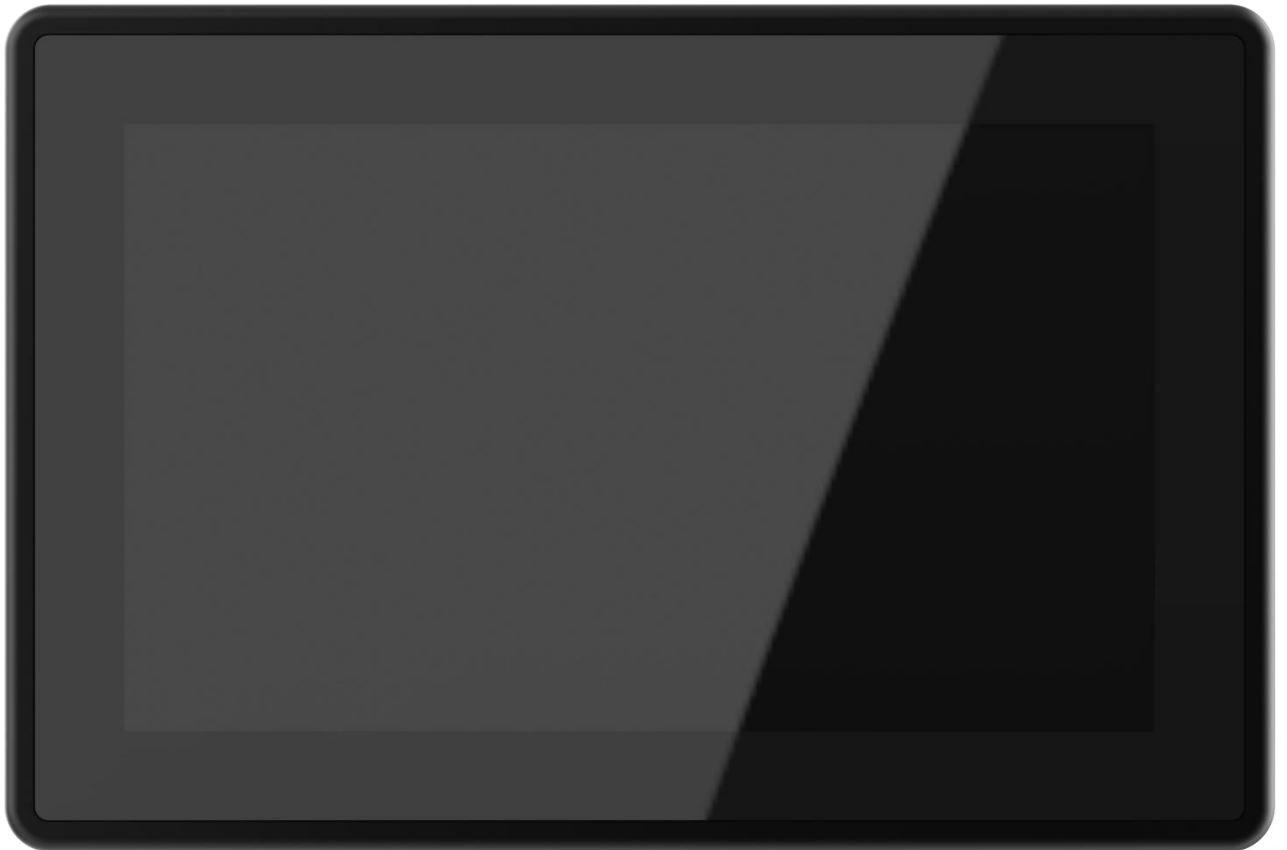
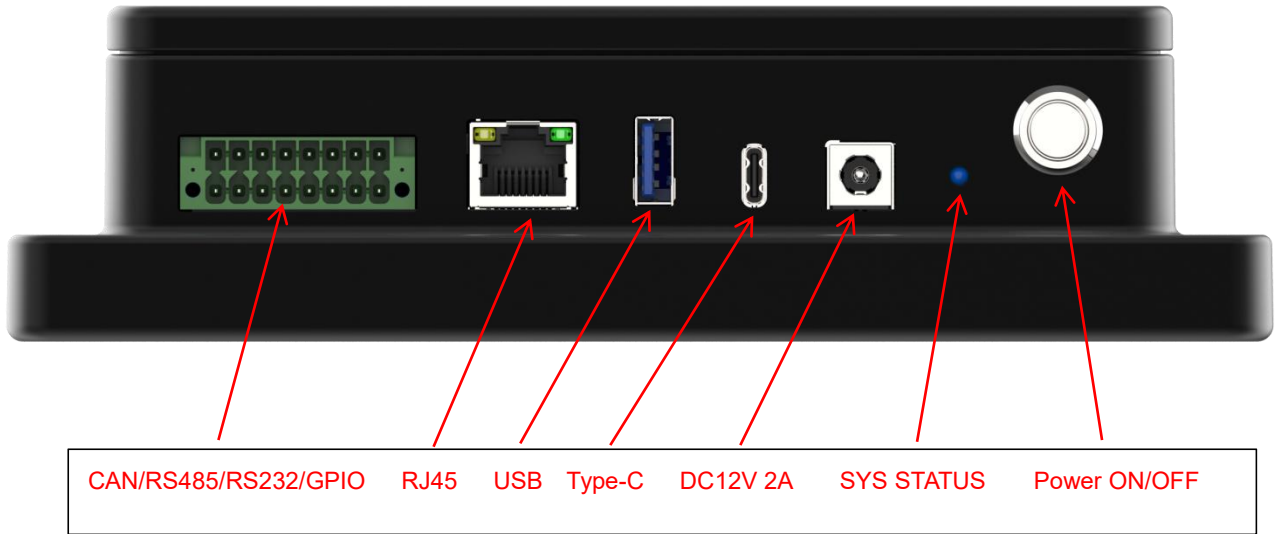
The HMI-JM070049-A2 Industrial Tablet Arduino Uno Q offers a range of performance and connectivity options for scalable integration, providing expandability for future needs. Here are some key features:

HMI-JM070049-A2

HMI-JM070049-A2	
Central Processor	Without Arduino Uno Q
Screen Size	6.95inch
Resolution	1024*600
Display Technology	IPS TFT
Touch Technology	Capacitive
Touch Points	10-Point multi-touch
Touch Response Method	Finger
Cover Lens	1.1mm Glass
Touch Panel Hardness	6H
Brightness	300cd/m ²
Contrast Ratio	1000:1
Viewing Angle	170° (Horizontal/Vertical)
Operating Temperature	-20°C ~70°C
Storage Temperature	-30°C~80°C
Power	DC 12V 2A (DC Connector 5.5*2.1)*1
USB	USB-Type-C *2
	USB 2.0 Host *1
Ethernet	1000M*1
Multi-Function Industrial Interface	CAN-RS485-RS232-GPIO*1
LCD	MIPI-LCD*1
Case color	Black

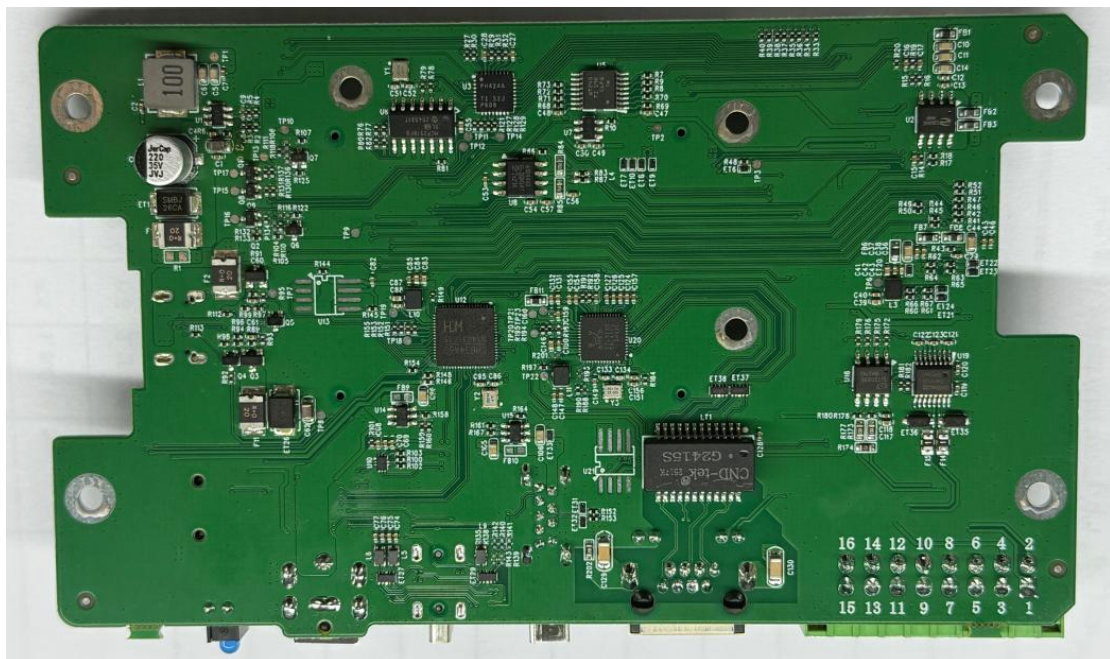
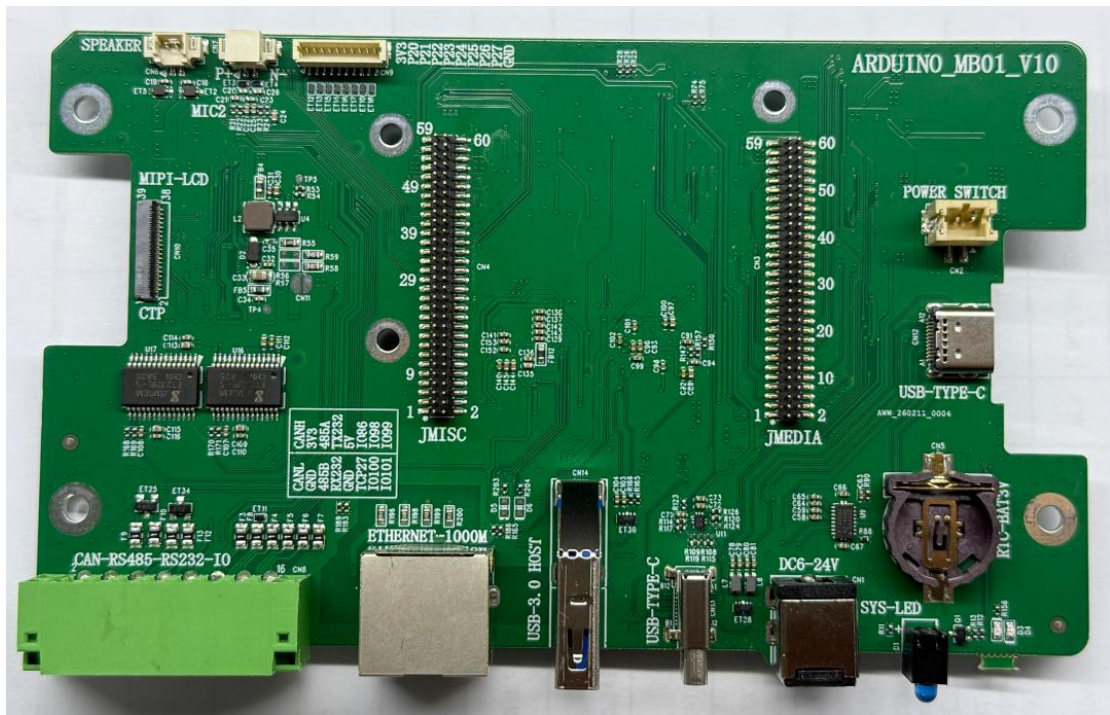
HMI-JM070049-A2

1.4: Peripheral Ports



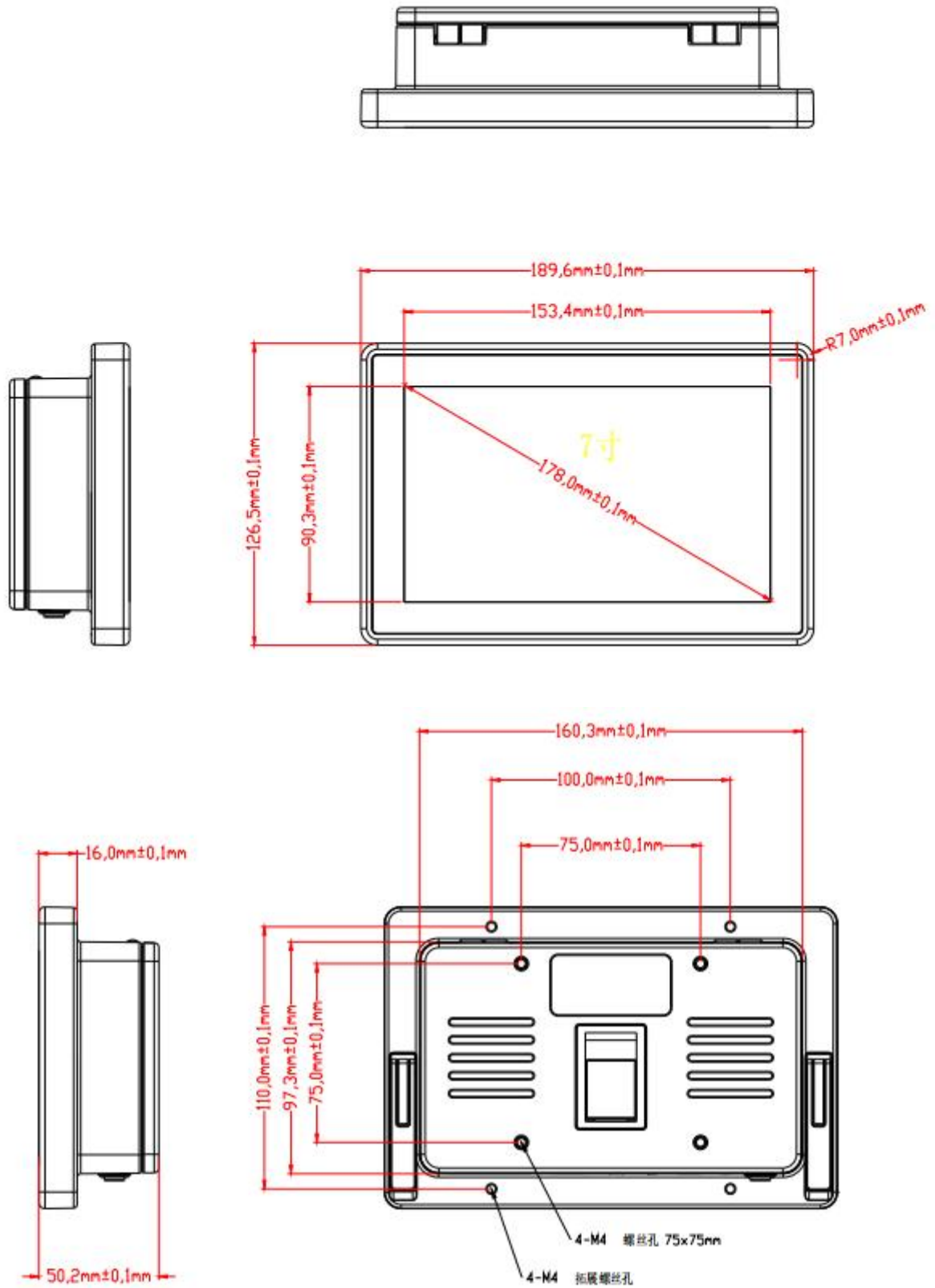
HMI-JM070049-A2

1.5: Picture for PCBA



HMI-JM070049-A2

1.5: Size



HMI-JM070049-A2

