

## 1. Product Introduction

### 1.1: Device Introduction

The HMI-JM070049 Industrial PC is an industrial-grade tablet computer based on the Arduino Uno Q. This product is user-friendly and ideal for developers and makers who are familiar with Arduino Uno Q and seeking a computer for daily use.

### 1.2: Key Applications

Human-Machine Interface (HMI)  
Process Control  
Process Monitoring  
Industrial Internet of Things (IIoT) Nodes  
Environmental Monitoring  
Programmable Controllers  
Education Applications  
ATM Machines...

#### **Warning:**

Installation, repair, and maintenance tasks should only be performed by trained personnel. We do not take any responsibility for damages caused by improper handling of the product.

### 1.3: Hardware Specifications

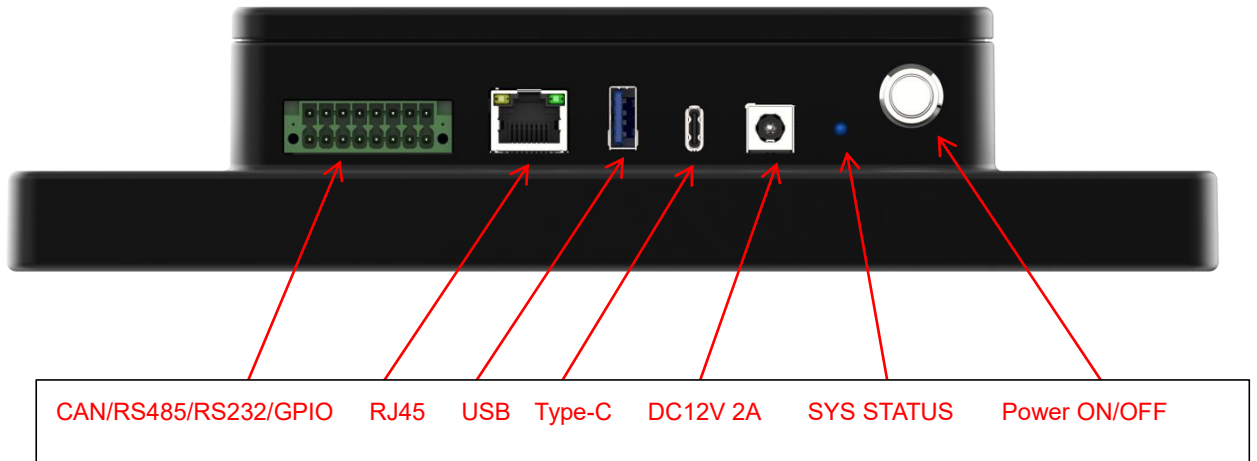
The HMI-JM070049-A2 Industrial Tablet Arduino Uno Q offers a range of performance and connectivity options for scalable integration, providing expandability for future needs. Here are some key features:

# HMI-JM101017-A2

HMI-JM101017-A2	
Central Processor	Without Arduino Uno Q
Screen Size	10.1inch
Resolution	1280*800
Display Technology	IPS TFT
Touch Technology	Capacitive
Touch Points	10-Point multi-touch
Touch Response Method	Finger
Cover Lens	1.1mm Glass
Touch Panel Hardness	6H
Brightness	300cd/m <sup>2</sup>
Contrast Ratio	1000:1
Viewing Angle	170° (Horizontal/Vertical)
Operating Temperature	-20°C~70°C
Storage Temperature	-30°C~ 80°C
Power	DC 12V 2A (DC Connector 5.5*2.1)
USB	USB-Type-C *2
	USB 2.0 Host *1
Ethernet	1000M*1
Multi-Function Industrial Interface	CAN-RS485-RS232-GPIO
LCD	MIPI-LCD*1
Case color	Black

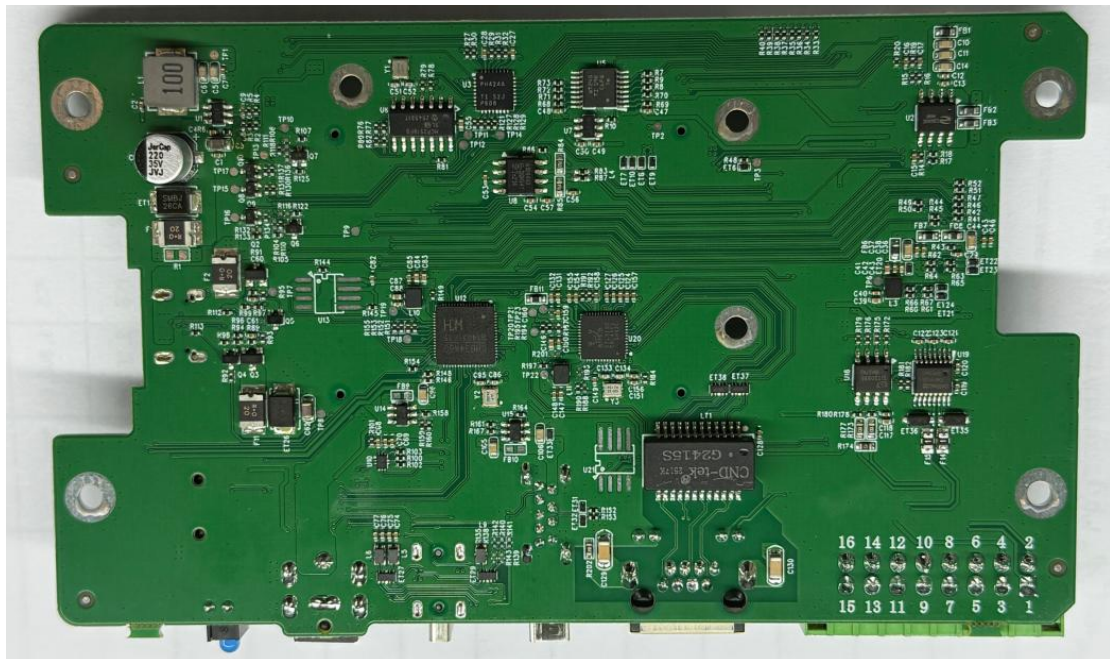
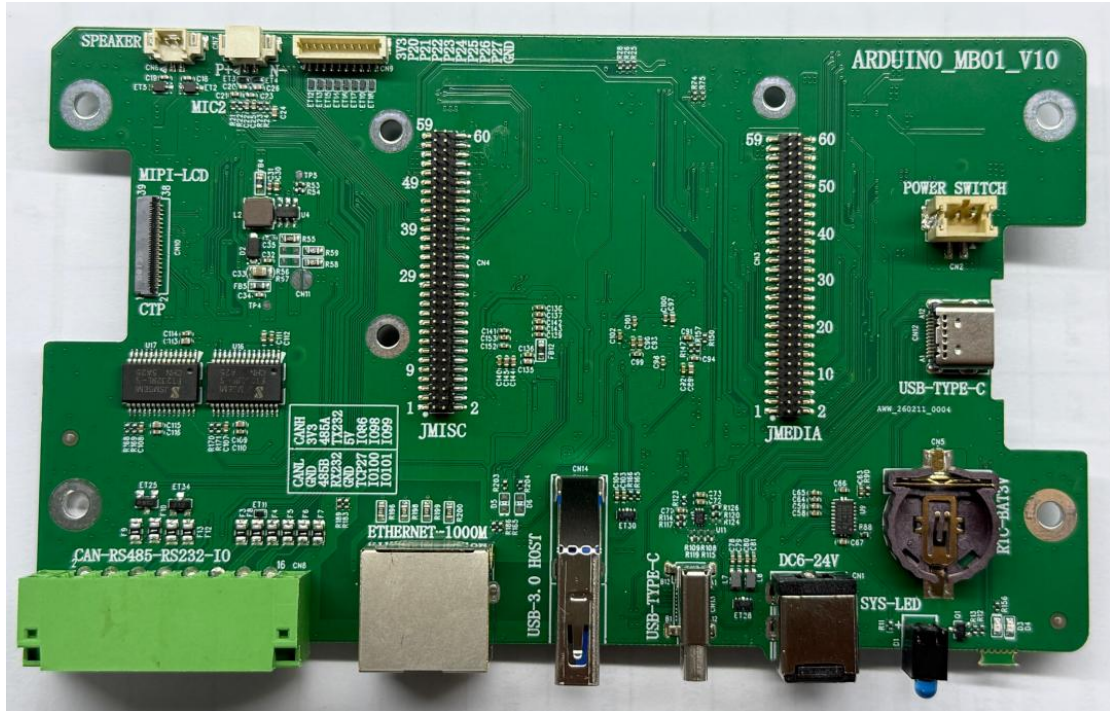
# HMI-JM101017-A2

## 1.4: Peripheral Ports



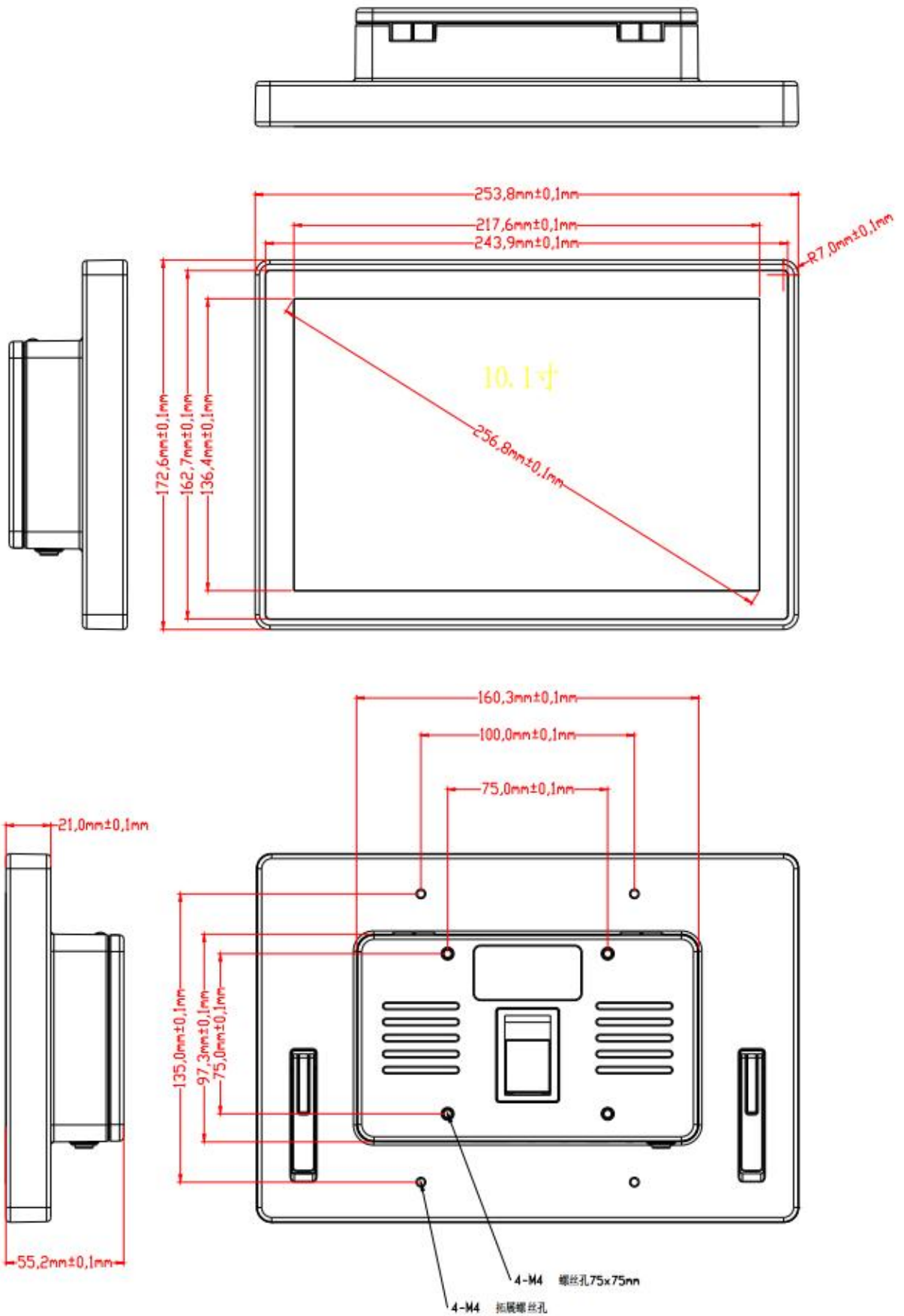
# HMI-JM101017-A2

## 1.5: Picture for PCBA



# HMI-JM101017-A2

## 1.5:Size



HMI-JM101017-A2

