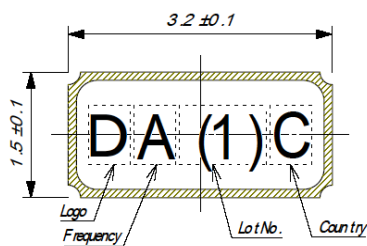


SPECIFICATION OF SURFACE MOUNT TYPE

1 .TYPE	DST310S
2 .NOMINAL FREQUENCY	32.768 kHz
3 .OVERTONE ORDER	Fundamental
4 .LOAD CAPACITANCE(CL)	12.5 pF
5 .FREQUENCY TOLERANCE	$\pm 20 \times 10^{-6}$ (at $25 \pm 3^{\circ}\text{C}$ )
6 .DRIVE LEVEL	0.2 $\mu\text{W} \pm 20\%$ (1 $\mu\text{W}$ max.)
7 .SERIES RESISTANCE	70 k $\Omega$ max. (at CL=Series/-40~+85 $^{\circ}\text{C}$ ) 110 k $\Omega$ max. (at CL=Series/+85~+125 $^{\circ}\text{C}$ )
8 .TURNOVER TEMPERATURE	+25 $\pm 5^{\circ}\text{C}$
9 .PARABOLIC COEFFICIENT	$-0.04 \times 10^{-6} / ^{\circ}\text{C}^2$ max.
10 .OPERATING TEMPERATURE RANGE	-40 ~ +125 $^{\circ}\text{C}$
11 .STORAGE TEMPERATURE RANGE	-40 ~ +125 $^{\circ}\text{C}$
12 .SHUNT CAPACITANCE(C0)	1.3 pF typ.
13 .INSULATION RESISTANCE	500 M $\Omega$ min. (at DC 100 $\pm$ 15V)
14 .TAPING	3000 pcs/reel
15 .PART NUMBER	258308
16 .DIMENSIONS	Refer to Fig-1



&lt;TOP VIEW&gt;

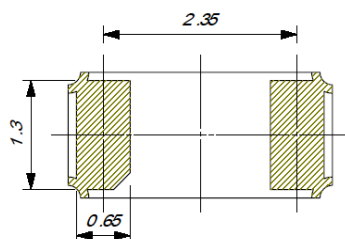
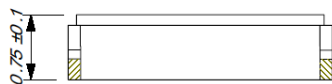
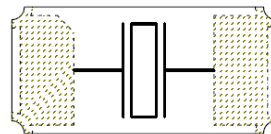


Fig.-1

DA(1)C
--------

**D** : manufacturer's code  
**A** : Nominal Frequency  
**(1)** : Lot. No.  
**C** : The place of origin