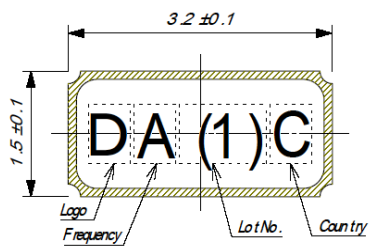
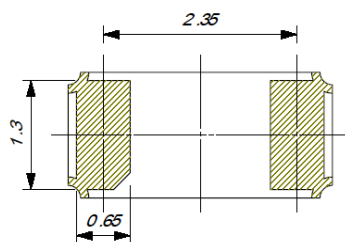
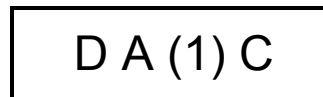
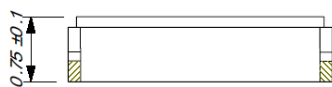
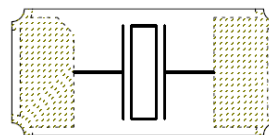


SPECIFICATION OF SURFACE MOUNT TYPE

1 .TYPE	DST310S
2 .NOMINAL FREQUENCY	32.768 kHz
3 .OVERTONE ORDER	Fundamental
4 .LOAD CAPACITANCE(CL)	12.5 pF
5 .FREQUENCY TOLERANCE	$\pm 20 \times 10^{-6}$ (at $25 \pm 3^{\circ}\text{C}$)
6 .DRIVE LEVEL	0.2 $\mu\text{W} \pm 20\%$ (1 μW max.)
7 .SERIES RESISTANCE	70 k Ω max. (at CL=Series)
8 .TURNOVER TEMPERATURE	+25 $\pm 5^{\circ}\text{C}$
9 .PARABOLIC COEFFICIENT	$-0.04 \times 10^{-6} / ^{\circ}\text{C}^2$ max.
10 .OPERATING TEMPERATURE RANGE	-40 ~ +85 $^{\circ}\text{C}$
11 .STORAGE TEMPERATURE RANGE	-40 ~ +85 $^{\circ}\text{C}$
12 .SHUNT CAPACITANCE(C0)	1.3 pF typ.
13 .INSULATION RESISTANCE	500 M Ω min. (at DC 100 \pm 15V)
14 .TAPING	3000 pcs/reel
15 .PART NUMBER	258309
16 .DIMENSIONS	Refer to Fig-1



<TOP VIEW>



- D : manufacturer's code
- A : Nominal Frequency
- (1) : Lot. No.
- C : The place of origin

Fig.-1